

EDIH | 

**COMPETENCE  
NETWORK AI  
SÜDTIROL  
ALTO ADIGE**




**Funded by  
the European Union**  
NextGenerationEU

**eurac**  
research

 **Fraunhofer**  
ITALIA



HANDELSKAMMER BOZEN  
CAMERA DI COMMERCIO DI BOLZANO  
CIAMENA DL COMERZ DE BULSAN

 **hds unione**  
*we are economy*

 **hgvs**

**idm** INNOVATORS.  
DEVELOPERS.  
MARKETERS.

 Versuchszentrum  
Centro di Sperimentazione  
Research Centre  
**LAIMBURG**

**lvhapa**  
*Wirtschaftsverband Handwerk und Dienstleister  
Confartigianato Imprese*

 **RE  
WN**  
*Rete economia  
Wirtschaftsnetz*

 **Südtiroler  
Bauernbund**

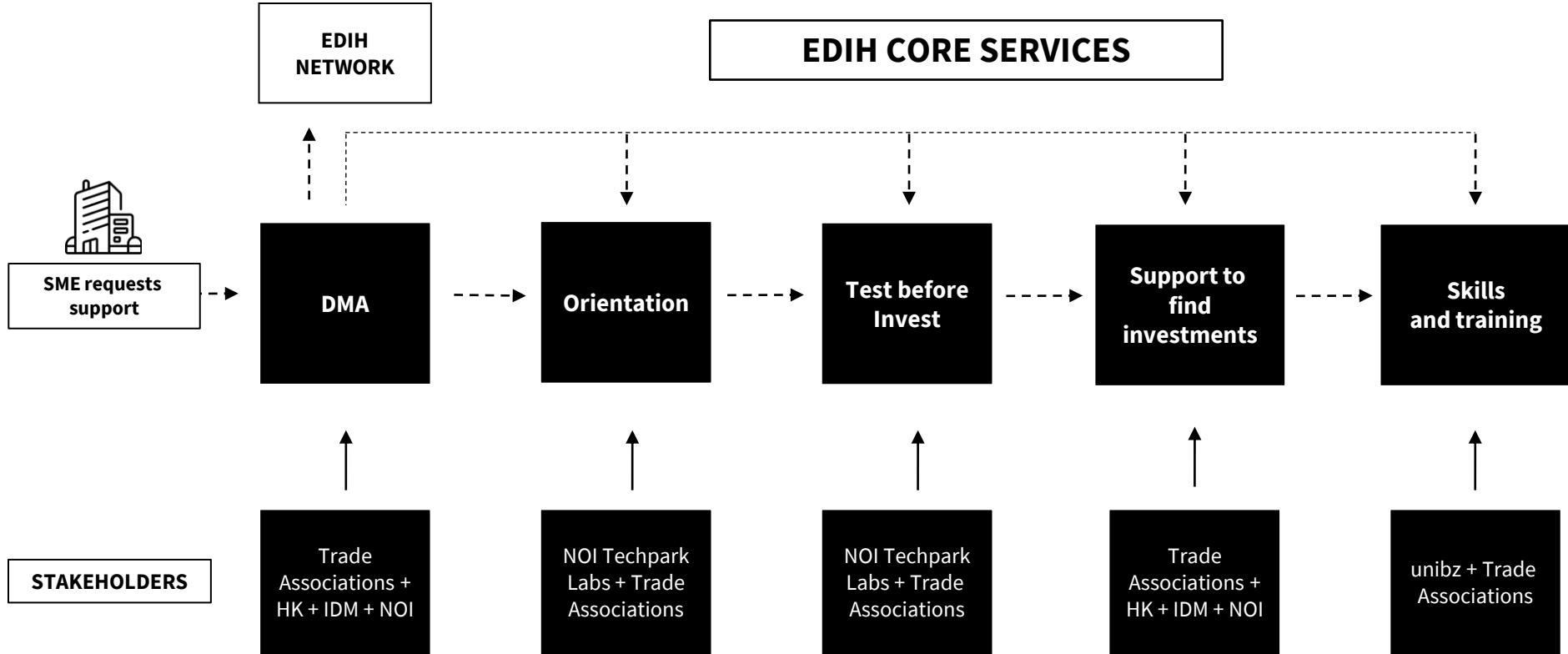
 **unibz**

 **UNTERNEHMERVERBAND  
CONFINDUSTRIA  
ALTO ADIGE · SÜDTIROL**

## FUNDING OF THE SERVICES

		MAXIMUM CONTRIBUTION IN % (TOTAL ELIGIBLE COSTS)		
SERVICE		MICRO AND SMALL ENTERPRISES	MEDIUM-SIZED ENTERPRISES	LARGE ENTERPRISES
<b>DMA (Digital Maturity Assessment)</b>		100% Art. 28 GBER	90% Art. 28 GBER	40% <i>De minimis rule</i>
<b>Test-before-invest activities</b>		100% Art. 28 GBER	80% Art. 28 GBER	30% <i>De minimis rule</i>
<b>Skills &amp; Training</b>	<b>Up to 24 hours</b>	100% Art. 28 GBER	80% Art. 28 GBER	50% Art. 31 GBER
	<b>More than 24 hours</b>	70% Art. 28 o 31 GBER	60% Art. 28 o 31 GBER	40% Art. 31 GBER
<b>Support to find investment</b>		70% Art. 28 GBER	60% Art. 28 GBER	50% <i>De minimis rule</i>

# EDIH NOI | CUSTOMER JOURNEY



# EDIH NOI | CUSTOMER JOURNEY



SME requests  
support



**DMA**

**STAKEHOLDERS**

Trade  
Associations +  
HK + IDM + NOI





HANDELSKAMMER BOZEN  
CAMERA DI COMMERCIO DI BOLZANO  
CIAMENA DL COMERZ DE BULSAN

 **hds unione**  
*we are economy*



**iDM** INNOVATORS.  
DEVELOPERS.  
MARKETERS.

**EDIH** |  **COMPETENCE  
NETWORK AI  
SÜDTIROL/ALTO ADIGE**

**lvhapa**

Wirtschaftsverband Handwerk und Dienstleister  
Confartigianato Imprese

 **RE  
WN**  
*Rete economia  
Wirtschaftsnetz*



**Südtiroler  
Bauernbund**

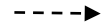


UNTERNEHMERVERBAND  
CONFINDUSTRIA  
ALTO ADIGE · SÜDTIROL

# EDIH NOI | CUSTOMER JOURNEY




SME requests  
support



STAKEHOLDERS

**eurac**  
research

 **Fraunhofer**  
ITALIA

EDIH |  COMPETENCE  
NETWORK AI  
SÜDTIROL/ALTO ADIGE

 Versuchszentrum  
Centro di Sperimentazione  
Research Centre  
**LAIMBURG**

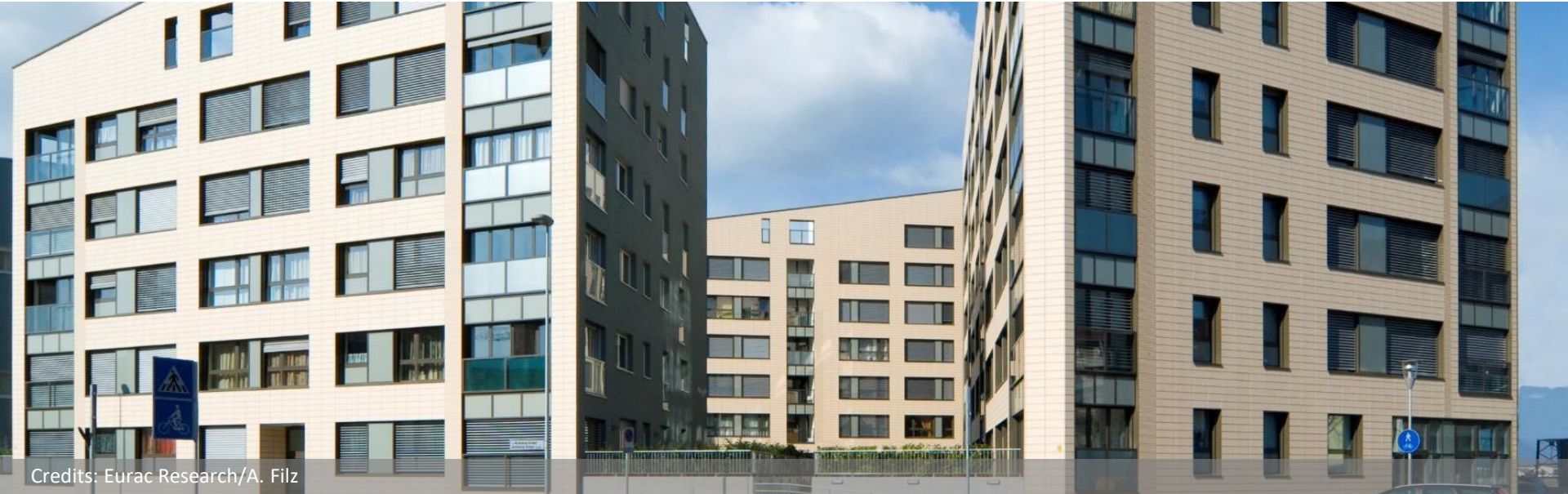
  
**unibz**



**eurac**  
research

# Energy Management

By using artificial intelligence, energy consumption and comfort in buildings can be optimized by controlling heating, cooling, lighting and e-mobility systems based on occupancy patterns and outdoor conditions.



## Predictive Maintenance

Artificial intelligence analyzes data from sensors embedded in components and systems to detect anomalies that indicate impending failures, minimizing plant downtime, reducing maintenance costs, and maximizing operational efficiency.



# Project Planning

Artificial intelligence enables the automatic generation of various building design options that are optimized for energy efficiency, structural integrity and costs.

Time and resource savings in the planning phase, more energy efficient and sustainable buildings.





*our research  
your progress*



ARENA

Fraunhofer  
ITALIA

Fraunhofer  
ITALIA





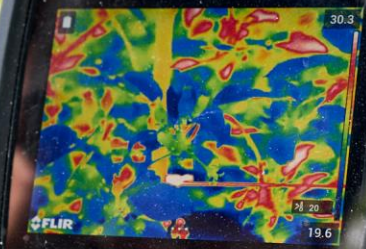
Versuchszentrum  
Centro di Sperimentazione  
Research Centre





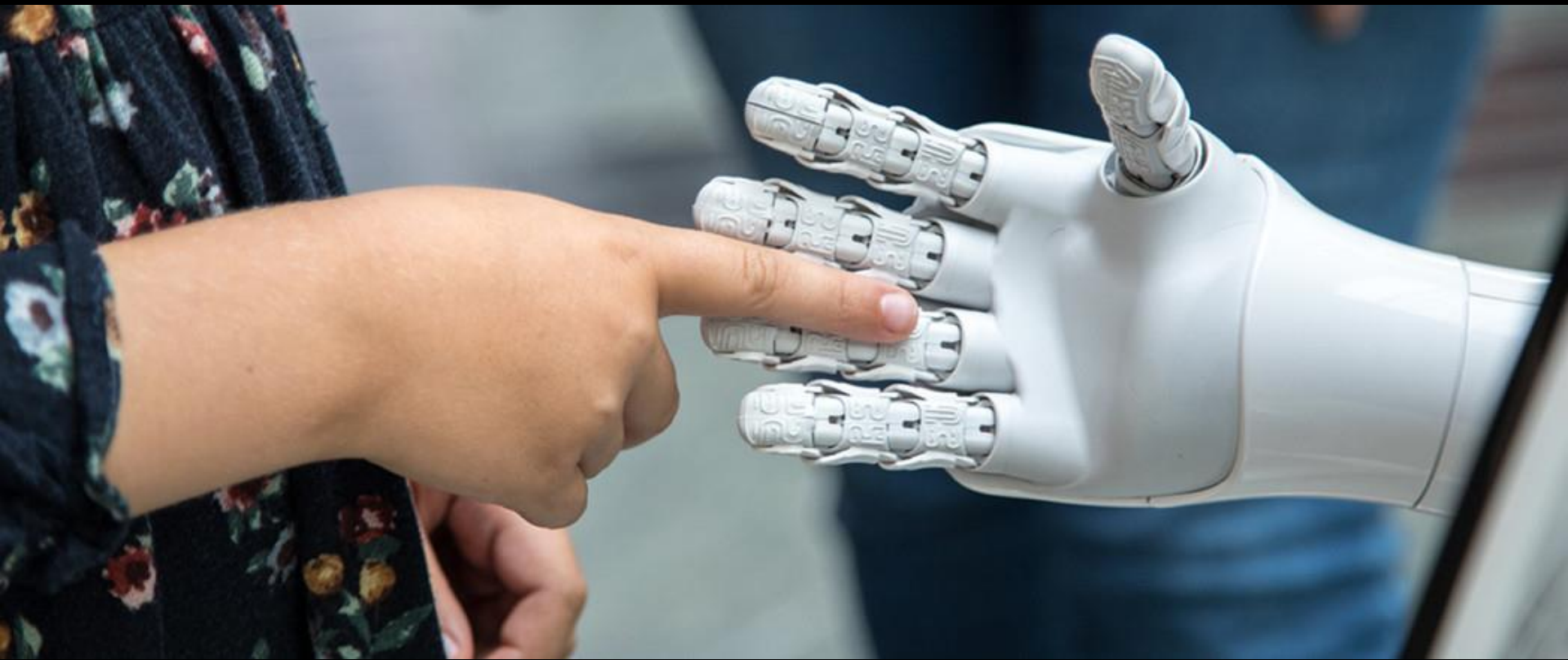


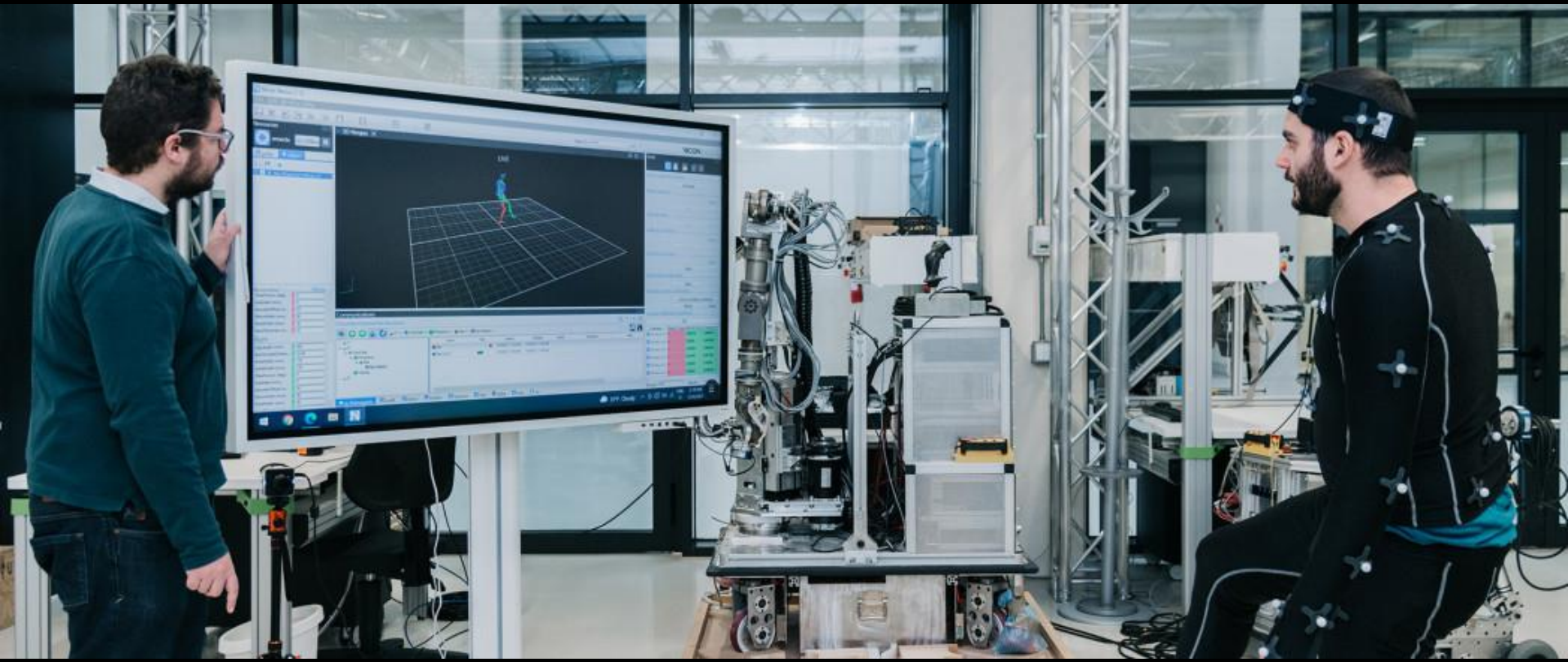
E95



30.3  
19.6  
P  
FLIR

—  
**unibz**  
—

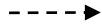
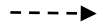




# EDIH NOI | CUSTOMER JOURNEY



SME requests  
support



**STAKEHOLDERS**

**eurac**  
research

 **Fraunhofer**  
ITALIA

EDIH |  COMPETENCE  
NETWORK AI  
SÜDTIROL/ALTO ADIGE

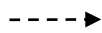
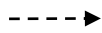
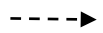
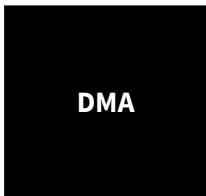
 Versuchszentrum  
Centro di Sperimentazione  
Research Centre  
**LAIMBURG**

  
**unibz**

# EDIH NOI | CUSTOMER JOURNEY



SME requests support



**STAKEHOLDERS**





HANDELSKAMMER BOZEN  
CAMERA DI COMMERCIO DI BOLZANO  
CIAMENA DL COMERZ DE BULSAN

 **hds unione**  
*we are economy*



**iDM** INNOVATORS.  
DEVELOPERS.  
MARKETERS.

**EDIH** |  **COMPETENCE  
NETWORK AI  
SÜDTIROL/ALTO ADIGE**

**lvhapa**

Wirtschaftsverband Handwerk und Dienstleister  
Confartigianato Imprese

 **RE  
WN**  
*Rete economia  
Wirtschaftsnetz*



**Südtiroler  
Bauernbund**



**UNTERNEHMERVERBAND  
CONFINDUSTRIA  
ALTO ADIGE · SÜDTIROL**

# EDIH NOI | CUSTOMER JOURNEY



SME requests  
support



**STAKEHOLDERS**

—  
**unibz**  
—



Master di 1° livello in

## Digital Transformation e Smart Manufacturing

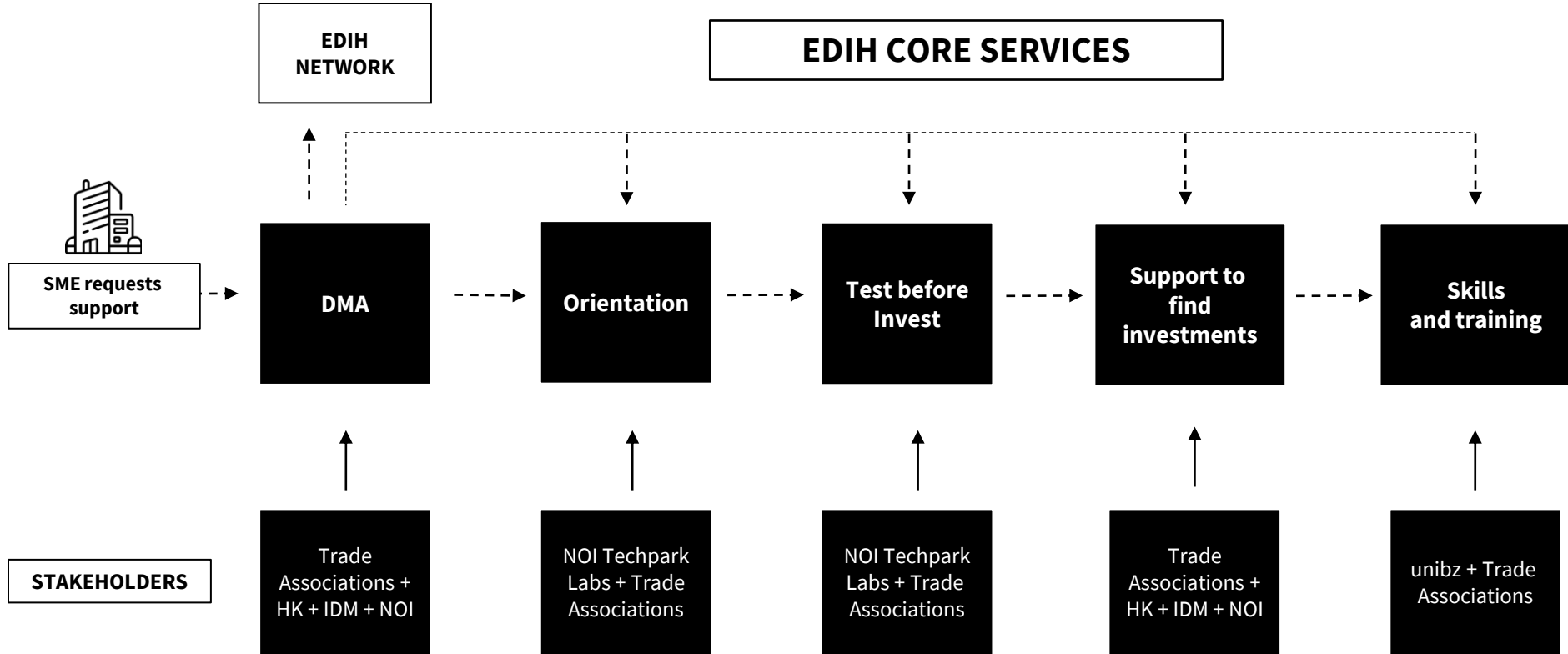
Il primo Executive Master in Alto Adige per approfondire le tecnologie dell'Industria 4.0/5.0 e la loro applicazione pratica per migliorare l'efficienza e la sostenibilità dei sistemi produttivi, delle aziende e delle catene di fornitura

Il Master in Digital Transformation e Smart Manufacturing è un master di primo livello – sviluppato all'interno delle attività dell'**European Digital Innovation Hub (EDIH)** di Bolzano – che mira a fornire a laureati di primo livello (triennali) una specializzazione sull'applicazione delle tecnologie digitali in produzione e nelle catene di fornitura.

I/le partecipanti avranno modo di approfondire le principali **tecnologie dell'Industria 4.0/5.0** (robotica collaborativa e avanzata, simulazione, IoT, cybersecurity, AI, additive manufacturing, AR/VR...) anche dal



# EDIH NOI | CUSTOMER JOURNEY



EDIH | NOI

**COMPETENCE  
NETWORK AI  
SÜDTIROL  
ALTO ADIGE**



**Funded by  
the European Union**  
NextGenerationEU

**[EDIH.NOI.BZ.IT](https://www.edih.noi.bz.it)**

**[EDIH@NOI.BZ.IT](mailto:EDIH@NOI.BZ.IT)**